

Paola Cerutti
architetto
EPFL/SIA/OTIA

Dario Buzzi
geometra
tecnico edile

centro montana
via ai molini 3
6616 Losone
Suisse

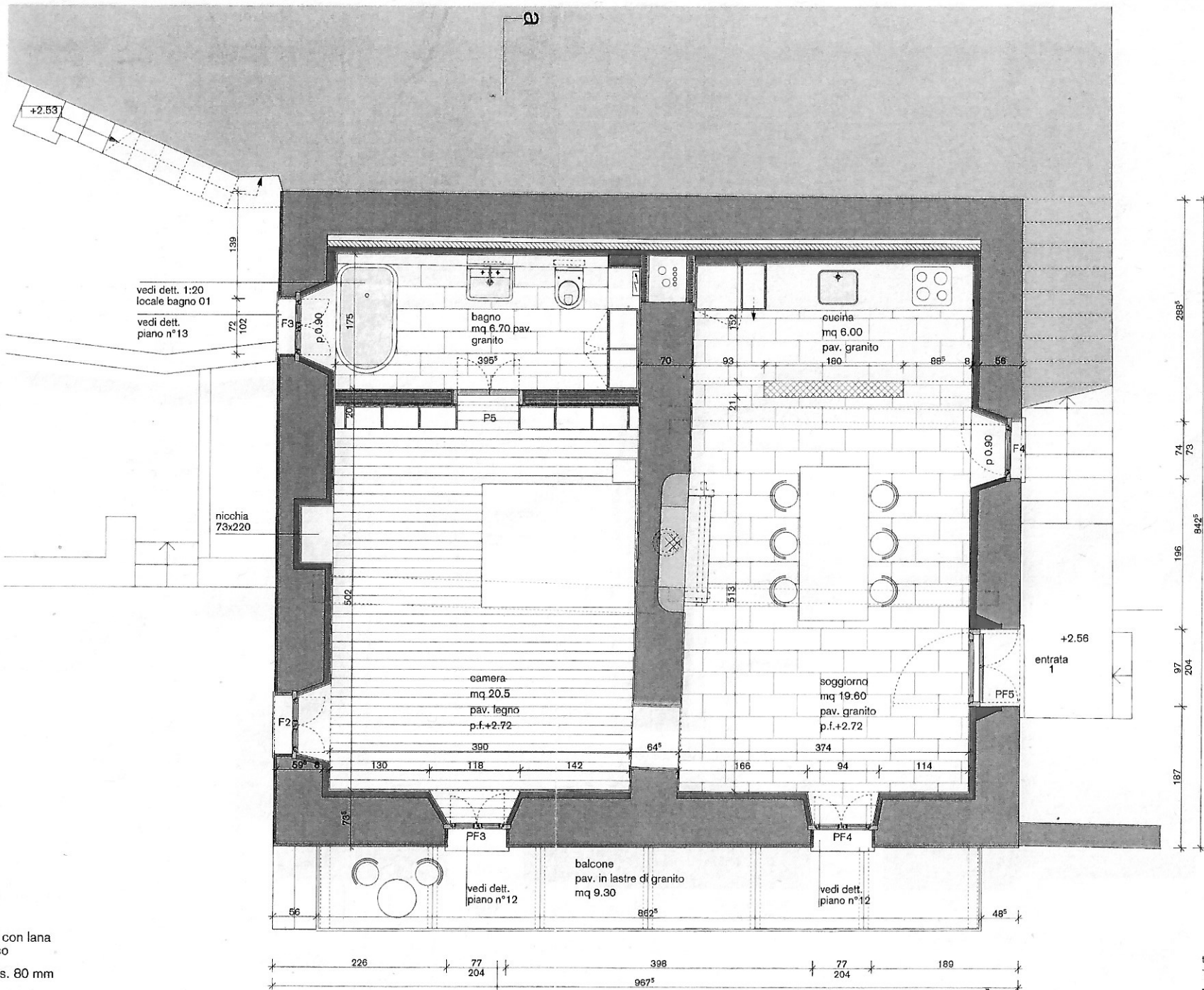
PIANTA 1° PIANO




01



casa repetti
nevedone
fondo 360
6614 Brissago

revisione
21.01.14 / ig
scala: 1:50



-  esistente
-  calcestruzzo armato
-  parete in cartongesso con lana minerale nell'infradosso
-  muratura in BKS spess. 80 mm
-  isolante termico spess. 50/80 mm tipo Foamglass
-  intonaco isolante spess. 30 mm tipo Biotherm Haga

telefono e fax
+41 (0)91 791 24 45
mobile paola cerutti
+41 (0)79 686 13 01
mobile dario buzzi
+41 (0)79 126 38 75
e-mail
cerutti-buzzi@bluwin.ch